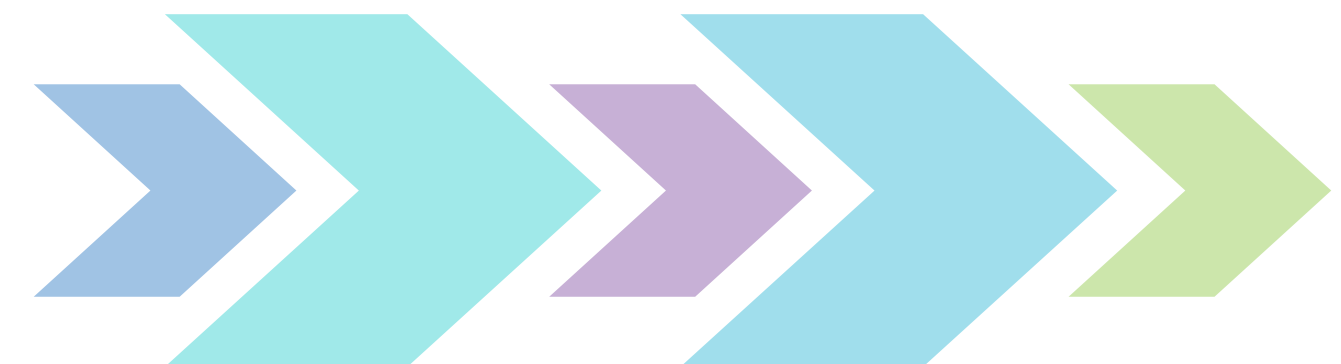




Hampshire Hospitals
NHS Foundation Trust

ANDOVER COMMUNITY DIAGNOSTIC CENTRE



WHAT IS THE ACDC? ➤

- Hampshire Hospitals have secured investment of £8.2million to create a Community Diagnostic Centre Andover War Memorial Hospital – developed from The Richards Report
- The vision is to provide improved diagnostic access for patients, enhancing community access and reduce pressure on acute trust sites (Basingstoke and Winchester)
- Part of HHFT's on-going investment in Andover it will also provide modernised facilities for the Minor Injuries Unit and Maternity departments
- Support faster diagnosis for cancer patients, and reduce waits for patients waiting for elective care
- Part of a wider programme across Hampshire and Isle of Wight for four new local diagnostic centres
- Increased access for primary care colleagues – enabling a more integrated experience for patients



BENEFITS

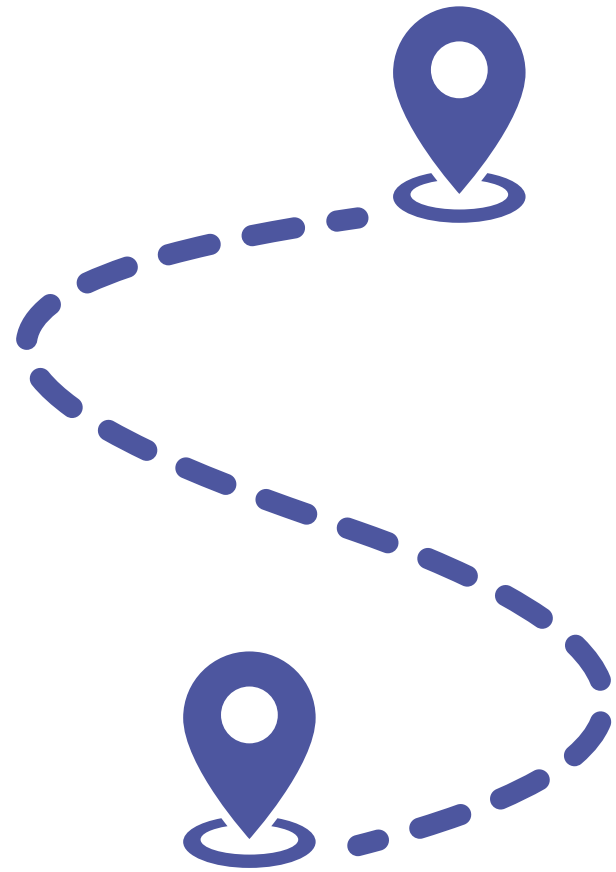


- Patients will have greater access to vital services all whilst staying closer to home – speeding up early diagnosis and reducing waiting times.
- The expansion of the services in the heart of the Andover community will cover seven days a week and will mean people no longer have to travel to the hospitals in Basingstoke and Winchester – or indeed further afield – for the care they need.
- The ACDC has been designed in collaboration with The Wessex Cancer Alliance and clinical experts. Hampshire Hospitals NHS Foundation Trust, which runs the hospitals in Andover, Basingstoke and Winchester, is also talking to local patients and service users, who are helping the trust to configure and design the new areas – keeping patient care at the heart of everything.

TIMELINES



Spring 2023



- Development of the U/S Hub for Obstetric and Non Obstetric Ultra Sound – with bespoke training area for Sonographers
- Co location of the Minor Injuries unit into the diagnostic footprint
- Increased X ray facilities across 7 days
- Extended access for CT and MRI across 7 days
- Redevelopment of maternity birthing services – to provide a modernised birthing area

Summer 2023

- Extra Endoscopy rooms extending access from 6 session to 20 sessions a week
- Full roll out of physiological measurement services – increased access to Echo, ECG, Lung Function Tests
- Increased Point of Care testing to support all imaging and testing



DIAGNOSTICS: THE FUTURE ➔

Andover Community Diagnostic Centre

£8.2m investment into additional HHFT diagnostics

Approved in 2022 – live from 2023



**1 x-ray room
7 U/S rooms/hub
1 MRI**

**Aligning minor
injuries to the
diagnostic footprint**

**Hubs to support
training and skill
development**

**Increased
Endoscopy, and
Physiological
measurement**

**Increased
phlebotomy access
and POCT**

BIRTHING DEPARTMENT ➤

- As part of this new project the maternity department be redeveloped. Providing an improved birthing environment for families, with a modernised setting for the maternity teams to work within.
- While these works are underway, the birthing services in Andover have been temporarily suspended.
- We have been in open communication with those this may impact, and alternative options are available for those with a planned birth at Andover during this time.
- We aim to re-introduce this service as soon as possible, likely in early 2023.



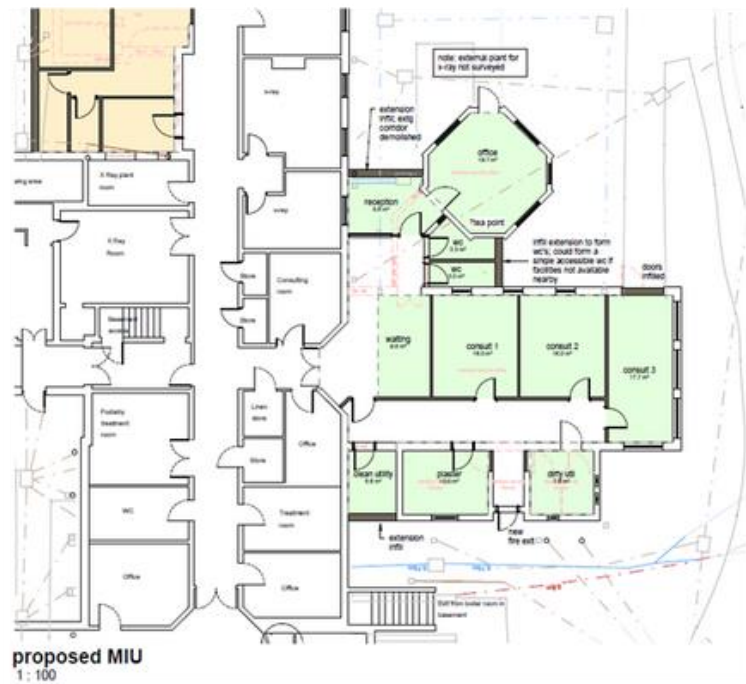
PLAIN FILM



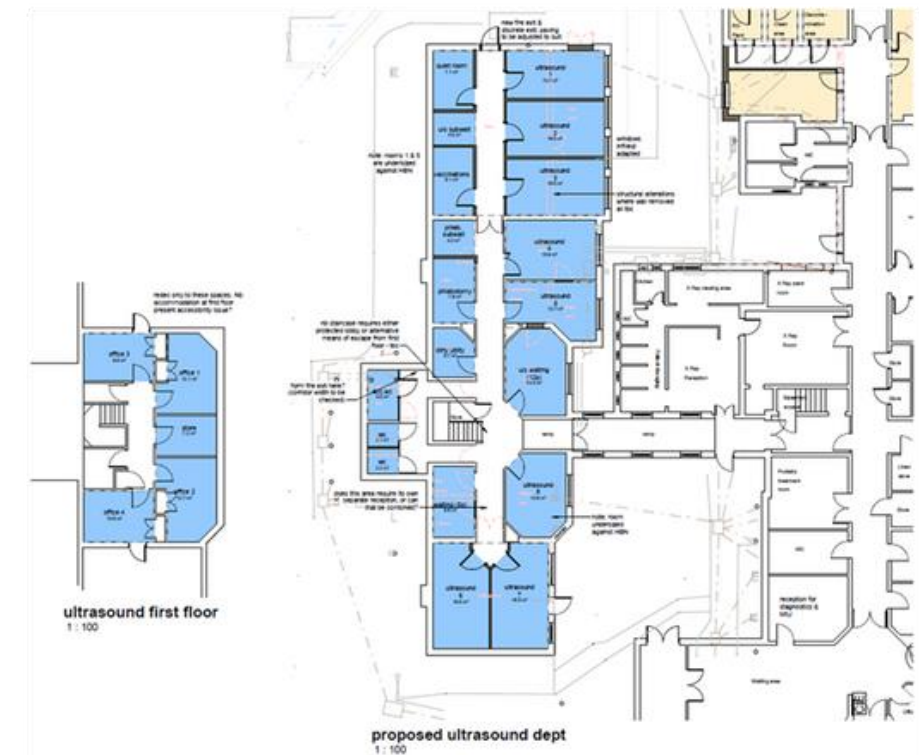
ENDOSCOPY



MINOR INJURIES UNIT

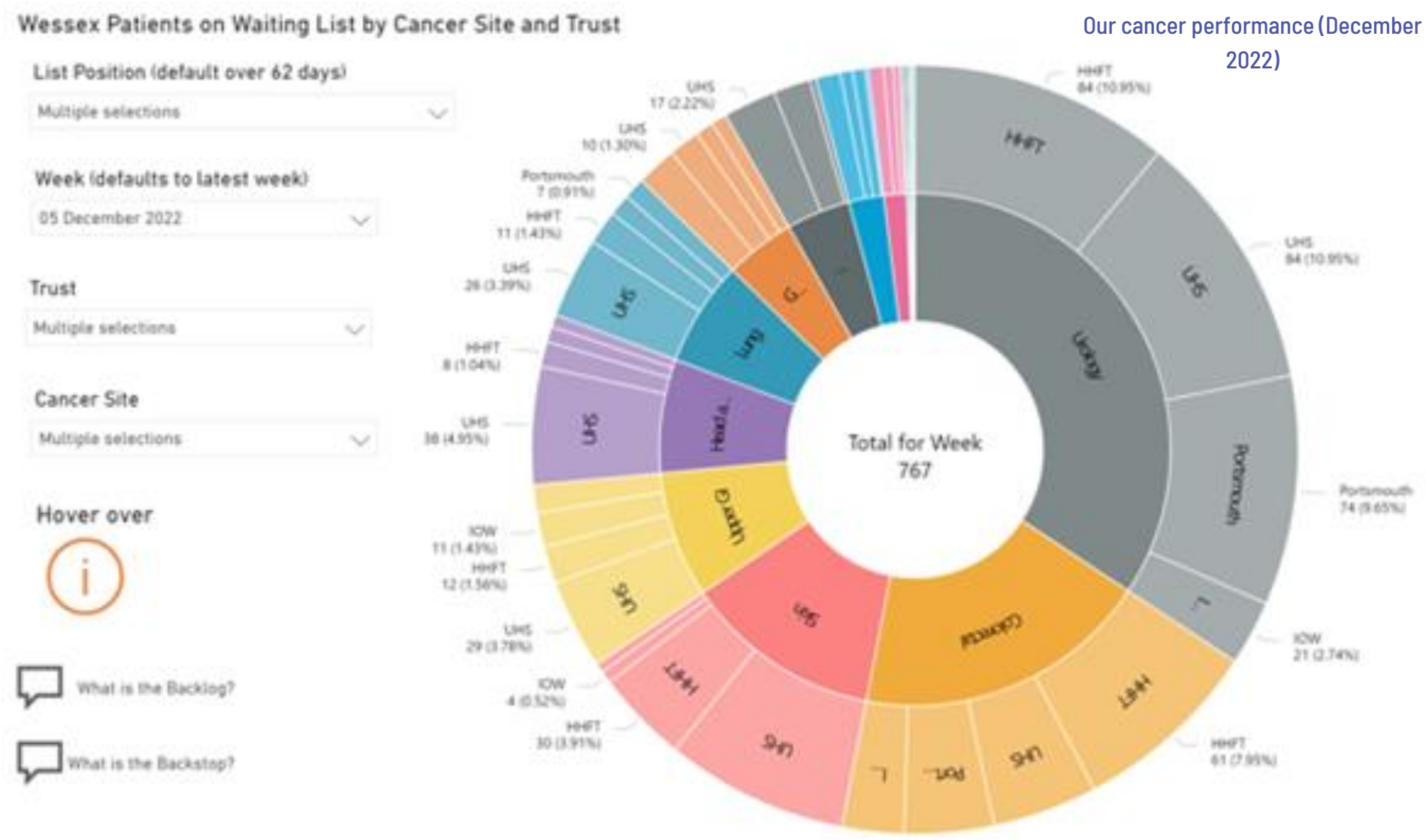


ULTRASOUND



OUR PROGRESS SO FAR ➔

Life expectancy in Hampshire is higher than the England average. There are however areas of deprivation which leads to a life expectancy gap of seven years for men and five years for women. The three largest causes of death in the county are CVD, Cancer and Respiratory Diseases. These account for the majority of the life expectancy gap between the least and most deprived quintiles: almost 70% for men and 55% for women.



The launch of the CT and MRI service at Andover plays an important part in early identification and timely referrals. There is a huge emphasis on MRI prostate to support Urology and CT support CT Colon for Colorectal.

The original business case quoted our ambition to meet 7 days from referral to acquisition and reporting.

OUR PROGRESS SO FAR ➔



CT

- Has been on site since November 2020
- We are the first trust in region delivering Cardiac CT in the community and provided proof of concept for performing community diagnostics



MRI

- Live from November 2022
- MRI van with permanent co located MRI next to CT from 2024

FURTHER ACTIVITY - RECRUITMENT/COMMS/ENGAGEMENT

- We were grateful to receive support for the ACDC bid from Test Valley Borough Council and Kit Malthouse MP.
- Working alongside ICB colleagues to ensure the project meets the needs of our population and allows health and social care partners to make the most of the significant investment.
- Engaging with stakeholders including healthcare partners, Healthwatch, the Army and service users.
- A productive focus group was held in December 2022 with maternity service users in collaboration with Hampshire Maternity Voices Partnership.
- The ACDC will allow us to recruit experts into Hampshire with an attractive offer of the diagnostic centre, with the hubs also becoming a crucial retention tool. Recruitment to these roles is ongoing.
- Further activity and updates to continue into 2023 .



